



G-Simualtions

Kneeboard manual

Version: 1.8

Inhalt:

- *Requirements:..... 2*
- *Functions:..... 3*
- *Installation:4-5*
- *Navigation log:..... 6*
- *Documents: 7*
- *Moving-Map: 8*
- *Notes: 9*
- *Calculator:..... 110*
- *Kneeboard Server manual: 11-19*

Requirements:

- *Microsoft Flugsimulator 2020*
- *.NET Runtime 4.5.2 (meist bereits vorinstalliert)*

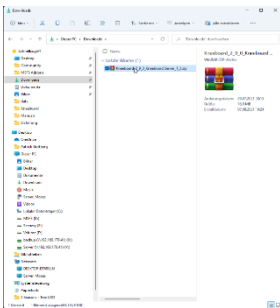
Functions:

- *Fully VR compatible*
- *Virtual keyboard*
- *Accessible via an in-game panel*
- *Navigation-log*
- *Weather-log*
- *Documents Viewer*
- *Moving map (incl. airspaces, nav aids, hotspots...)*
- *Teleport-function*
- *Notepad (writable with the mouse)*
- *Calculator*
- *Change easily the application colors*
- *Create your own application colors*
- *Edit map (Source code completely open source)*

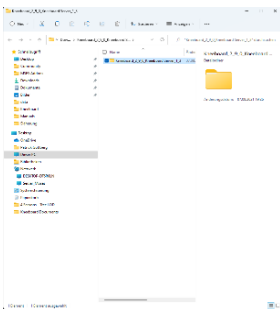
Installation:

The following steps are to be performed only if you are not using the Simmarket SimInstaller.

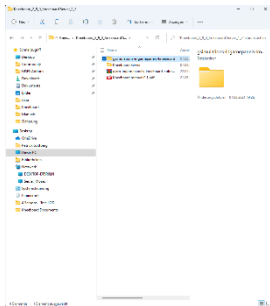
Otherwise you can start right away with the Kneebord Server installation (you will find this section further down in the Kneebord Server manual).



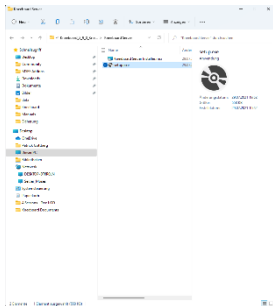
After downloading, unpack the Kneebord Server_x_x.zip



Now you have the same folder where the ingame-panel files and the installation files for the server are located



Inside this folder, you have a folder names "gsimulations- ingamepanels-kneeboard", you have to move this folder to your community folder.



After that, you only need to install the server application, which is located in the "Kneeboard Server" folder.

Navigation log:



A navigation log is a tool you use for pre-flight planning. The navigation log, is the centralization of all the information you need to arrive safely at a location, and be prepared for anyeventuality.

There are many different versions of navigation logs. Many aviation publishers sell printed copies, there are electronic versions on the Internet, and online and tablet-based flight planners.

But with Kneeboard, you now have the ability to create a flight plan directly in the simulator just like in real aviation.

Documents:



With Documents you have the possibility to display your own checklists, documents, tables and images directly in the flight simulator.

The formats .pdf and .jpg are supported.

The Kneebord

automatically converts all your documents into images so that they can be displayed in-game.

!! The documents- & map-tab are hidden if the server application isn't running. !!

Moving-Map:



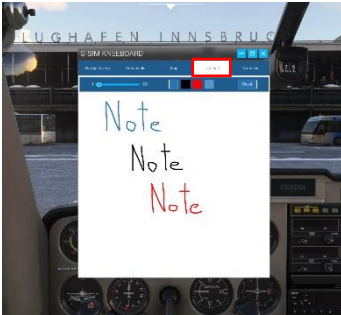
The flight map is an improved variant of the simulator's own VFR flight map. There are different layers available, such as a topological or a monochrome view. Airspaces, hotspots and control zones are clearly

displayed.

And if you ever want to change a location quickly and without the main menu, you can use the teleport function, which also offers you the possibility to change the flight direction, flight altitude and flight speed.

!! The documents- & map-tab are hidden if the server application isn't running. !!

Notes:



Notepad is a tool that allows you to make notes in-game and especially in VR. Since the instructions of a controller can sometimes be a bit longer, this tool is indispensable for flying in VR via VATSIM or IVAO, since frequent

requests can have a very negative effect on the radio traffic. But even if you don't want to have a writing pad or pen ready every time, the Notepad is just the right thing.

Calculator:



With Formulas, you have the ability to quickly and easily calculate various parameters such as flight time, descent point, standard rate turns, sink rates, conversions TAS to IAS, mb to inHg and many more during the flight without mental arithmetic and without a calculator.



G-Simualtions

Kneeboard server manual

Version: 1.8

Inhalt:

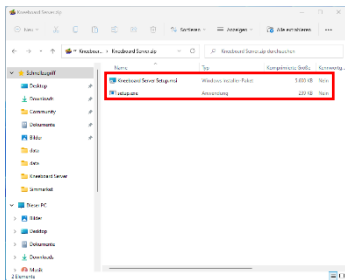
- *Functions:*..... 13
- *Installation:* 14
- *Usage:* 15
- *First start:*..... 16
- *Add Folders to the Server:* 17
- *Remove Folders from Server* 17
- *Add Documents to the Server:* 18
- *Remove Documents from Server:* 18
- *Show / Edit Navigation log in Browser:* 19
- *Save a Navigation log:*..... 19
- *Load last Simbrief Flight plan:*..... 20
- *Load a Navigation log:* 20
- *Load a Flight plan:* 21
- *Simbrief username input:* 21
- *Change start settings:* 22

Functions:

- *Prepares your documents to show in the in-game kneeboard*
- *Create/Show Navigation logs in your Browser*
- *Save Navigation logs to your file system*
- *Open Navigation logs from your file system*
- *Prpares the map to show in the in-game kneeboard*

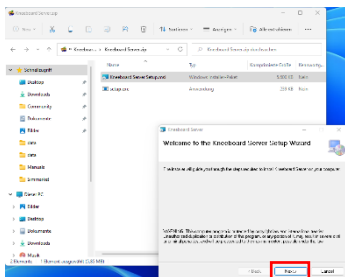
Download / Installation:

The following steps are to be performed only if you are using the Simmarket SimInstaller.



First you need to download the server application, click on the following link:

[Click here for download!](#)

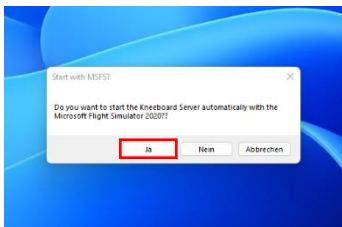


Second you have to run the the Kneebord Server Setup.msi or setup.exe

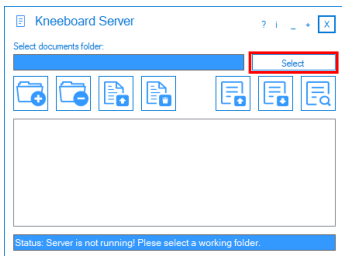
Usage:

The Kneeboard Server is the application in the background that allows to display documents, images or the flight map in-game, since the simulator inherently prohibits file access to the local system, this application creates a local server that then streams the data into the simulator. In addition, the application takes over the task of converting Pdf's into image files that can be used by the simulator.

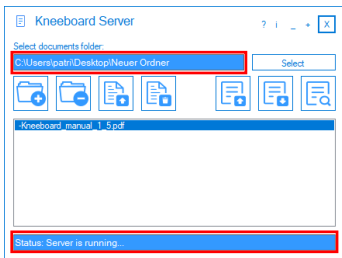
First Start:



After the first start of the server you have the choice to start the server automatically with the MSFS2020 flight simulator or not.



Next you need to specify a directory where the image files of the converted documents will be saved.

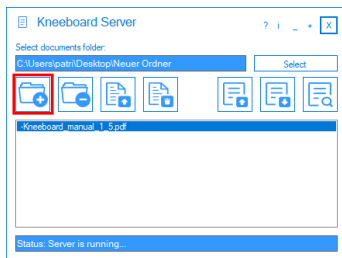


For example:

Create a folder named "MSFS_Documents" on a path of your choice.

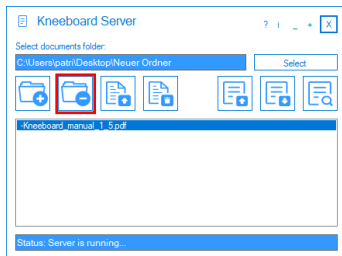
The server is now running.

Add Folders to the Server:



After you have selected a Documents Folder, you can click „Add a folder“ button and a new folder will be created.

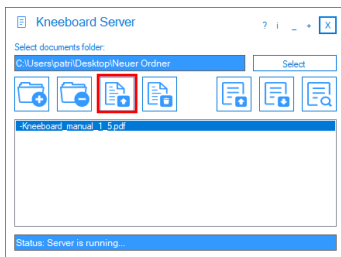
Remove Folders from the Server:



After cick on „Delete a folder“ button,

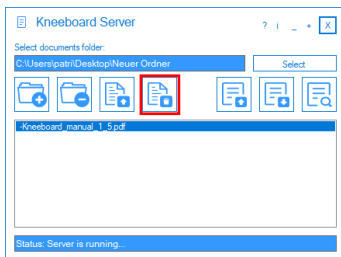
the folder and all files inside this will be deleted.

Add Documents to the Server:



After click on „Add a file“ button you can select a file for upload in the Server application.

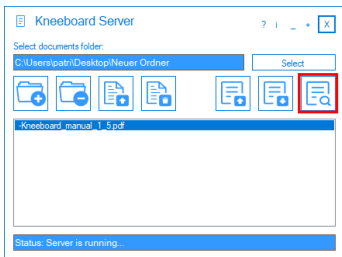
Remove Documents from the Server:



After ckick on „Delete a folder“ button,

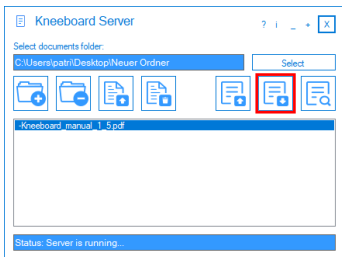
all prepared document data oft the selected file will be deleted.

Show / Edit Navigation log in Browser:



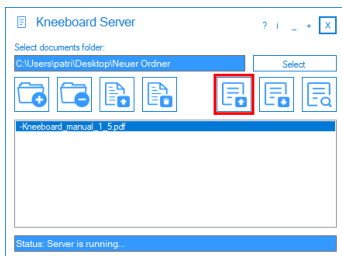
After selecting the “Show browser kneebord” button your Browser will open and show you the Navigation log. All inserts you do there, will be synchronized with the in-game navigation log.

Save a Navigation log:



After selecting the “Save a Navlog file” button a window will open, where you can select a target folder, for saving the navigation log.

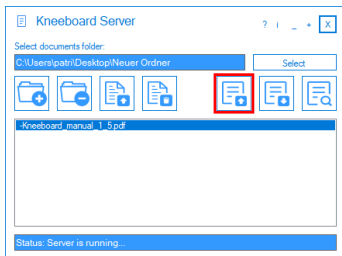
Load last Simbrief Flight plan:



After selecting the "Open a Navlog/flight-plan file" button, a window will open asking if you want to load the latest Simbrief flight plan, provided you have entered your Simbrief user ID.

!! Please make sure you have entered your Simbrief user id !!

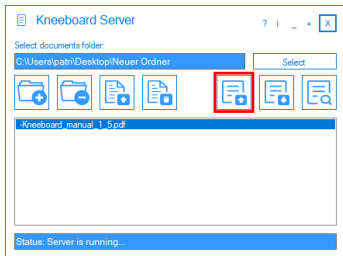
Load a Navigation log:



After selecting the "Open a Navlog file" button a window will open, where you can select a file for load in the in-game & browser navigation log.

!! All Your previous entries in-game/browser will be overwritten. !!

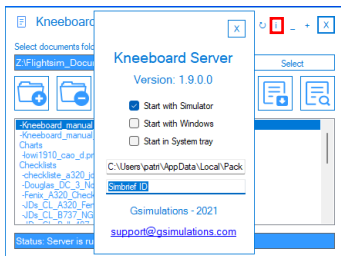
Load a Flight plan:



After selecting the “Open” button a window will open, where you can select a flight-plan for load in the in-game map.

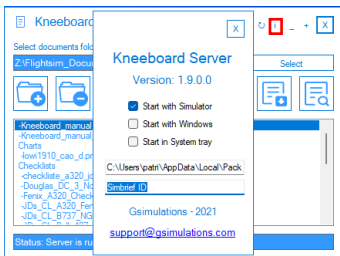
!! All Your previous waypoints will be overwritten, also make sure you have selected the map- tab in the ingame panel. !!

Simbrief username input:



After inserting the Simbrief user id, the Simbrief import will be unlocked.

Change start settings:



After selecting the “Information” button a window will open, where you can change the start settings from the Server application.